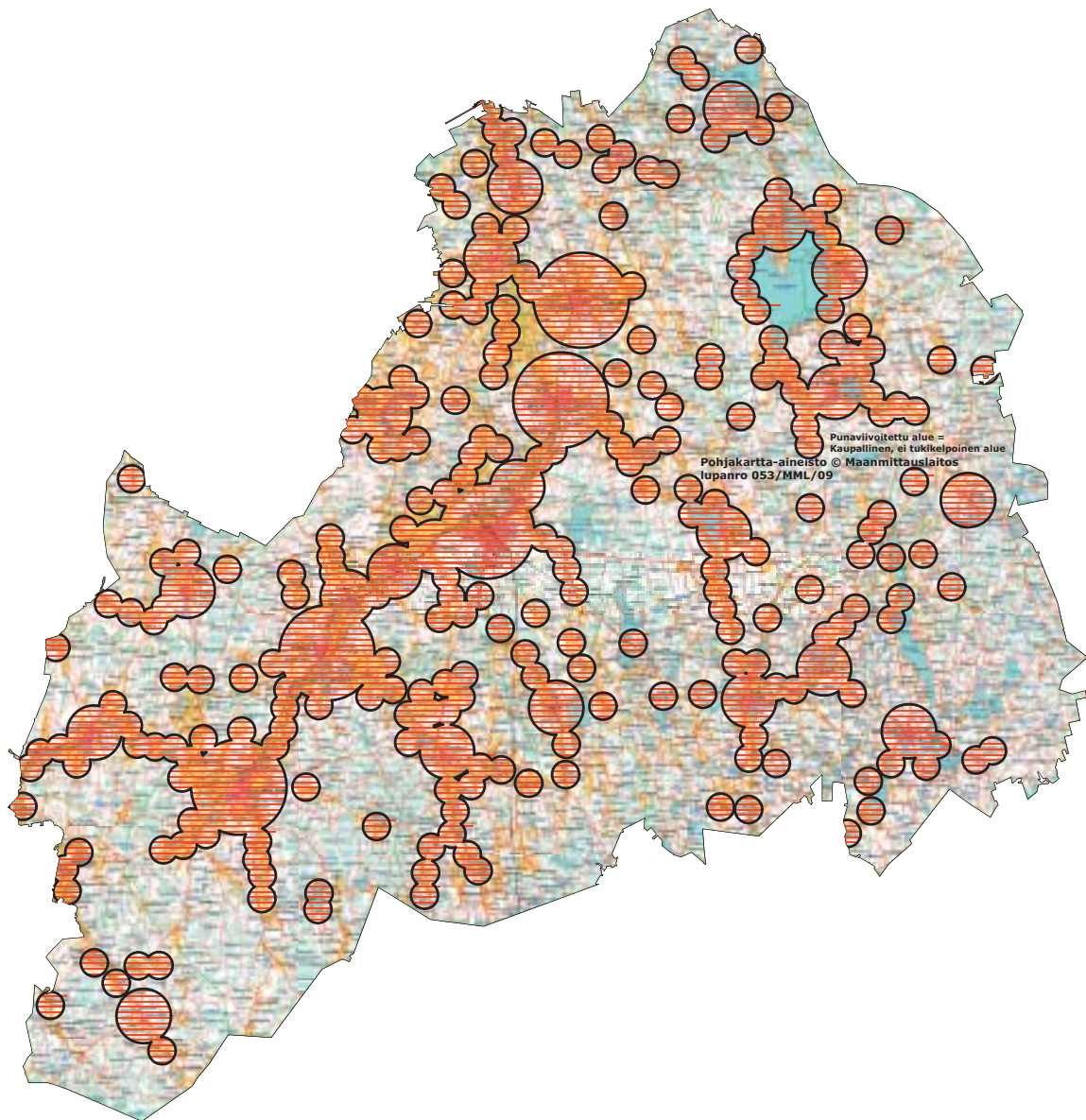


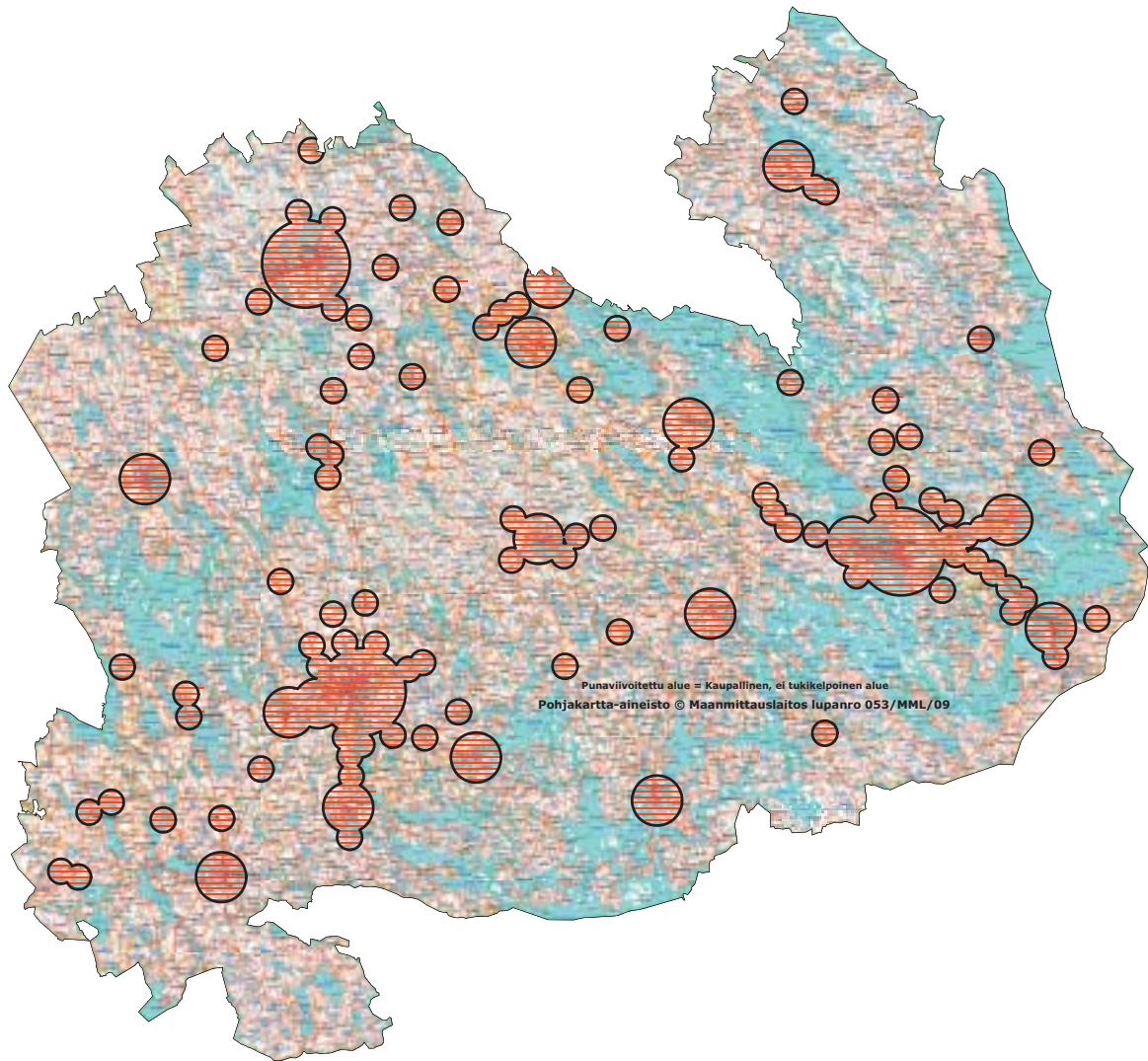
Etelä-Karjala, Södra Karelen



Etelä-Pohjanmaa, Sydösterbotten

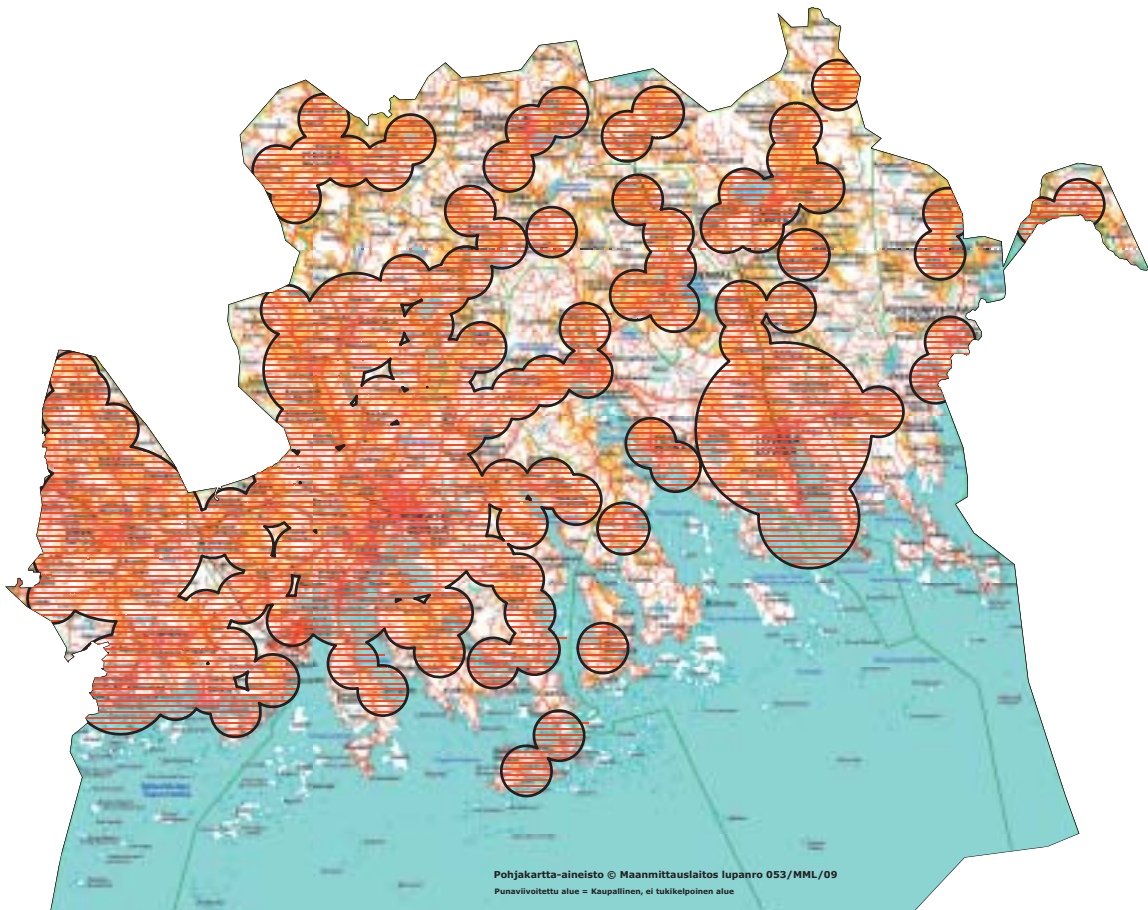


Etelä-Savo, Södra Savolax





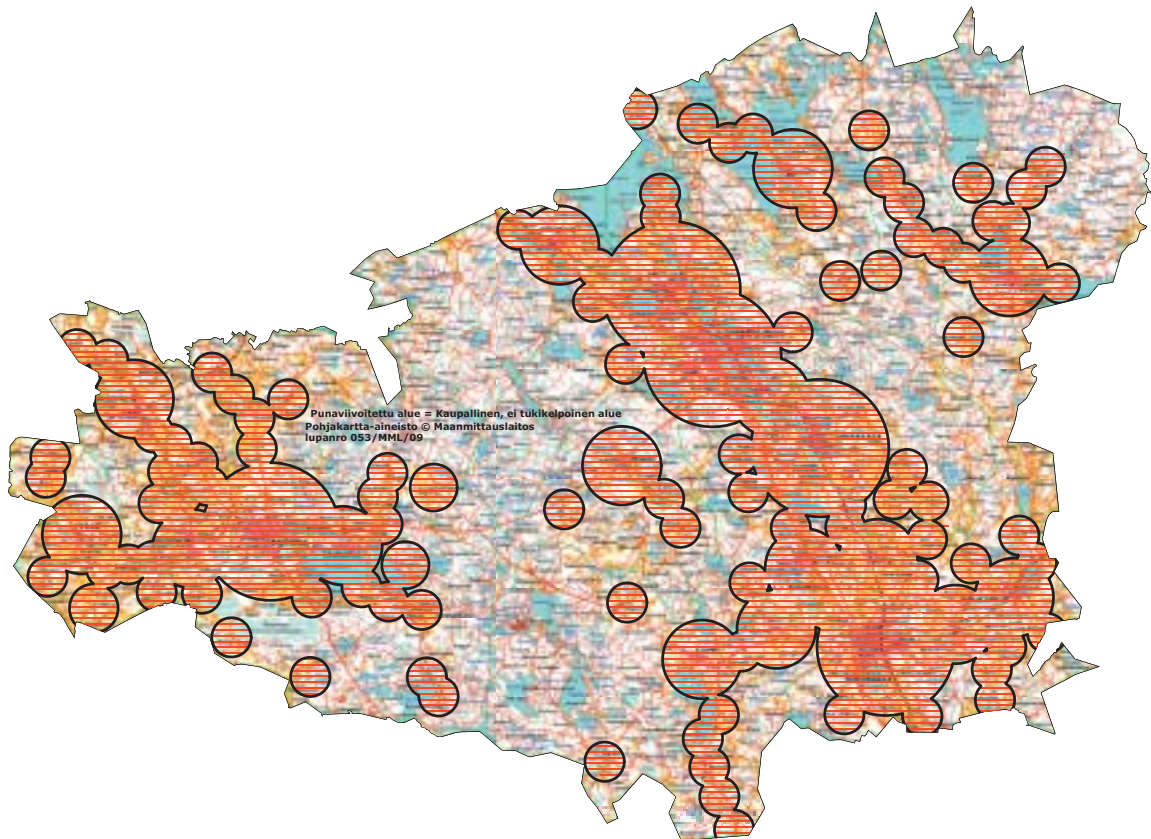
Itä-Uusimaa, Östra Nyland



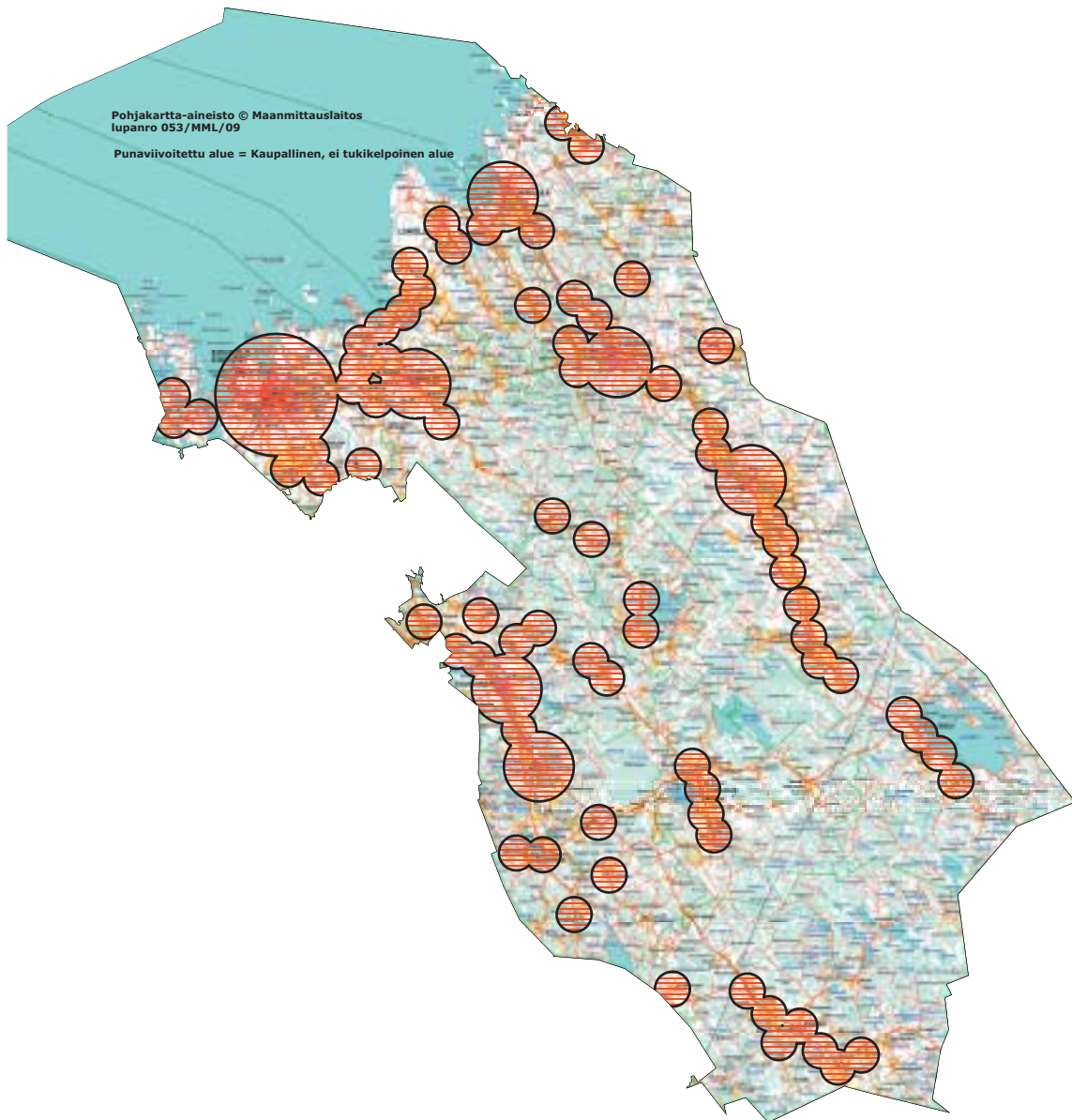
Kainuu, Kajanaland



Kanta-Häme, Egentliga Tavastland

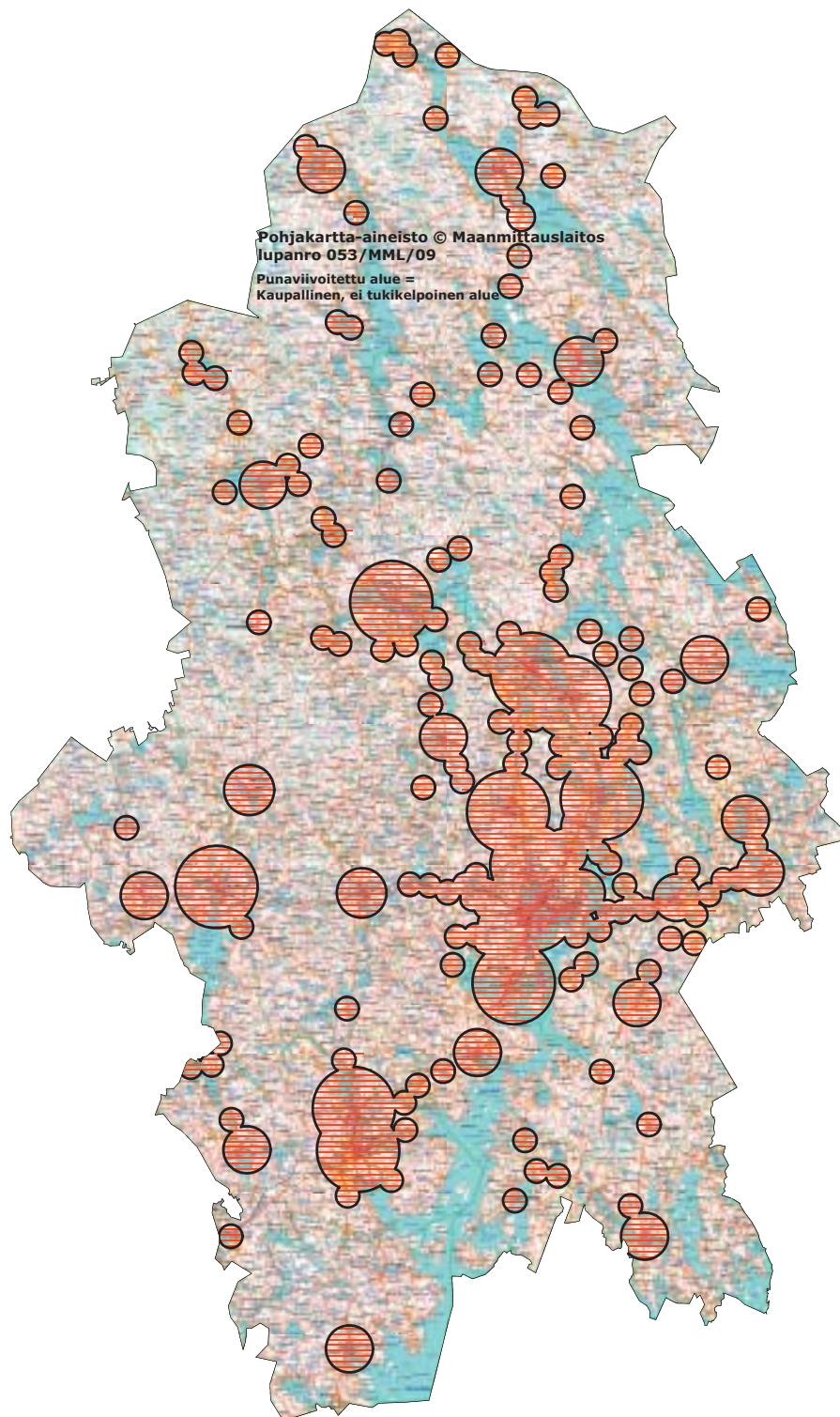


Keski-Pohjanmaa, Mellersta Österbotten

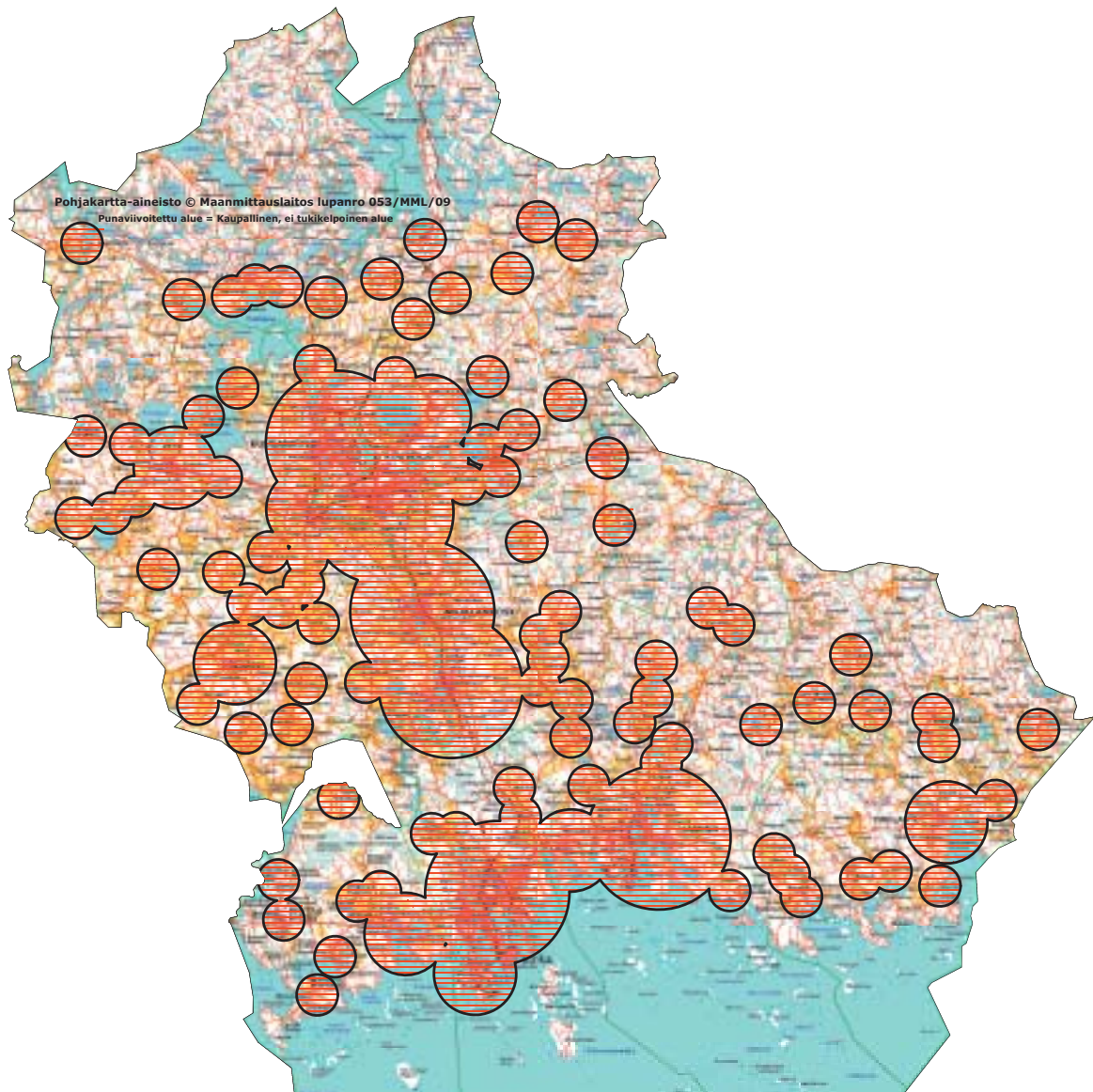




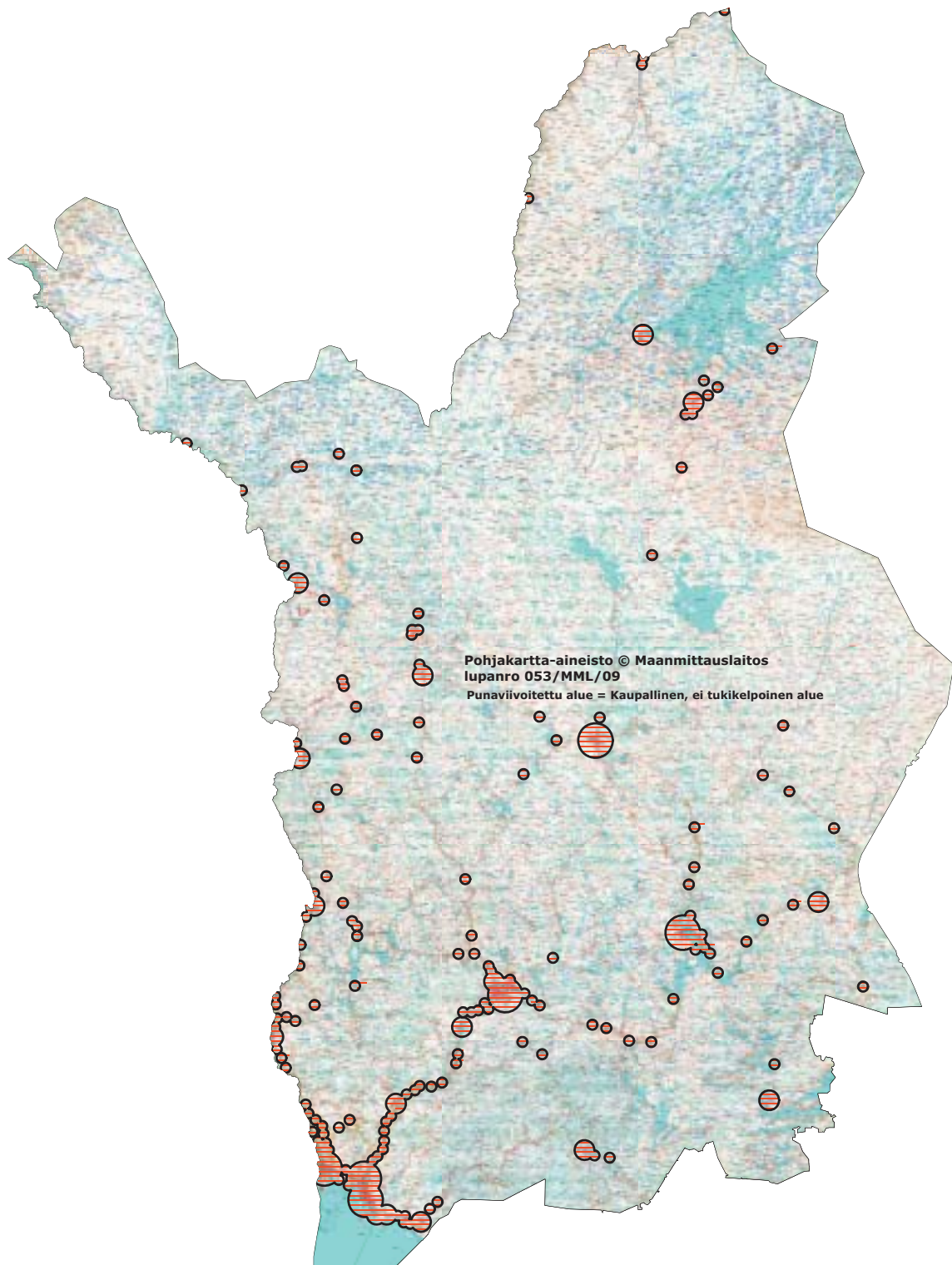
Keski-Suomi, Mellersta Finland



Kymenlaakso, Kymmenedalen

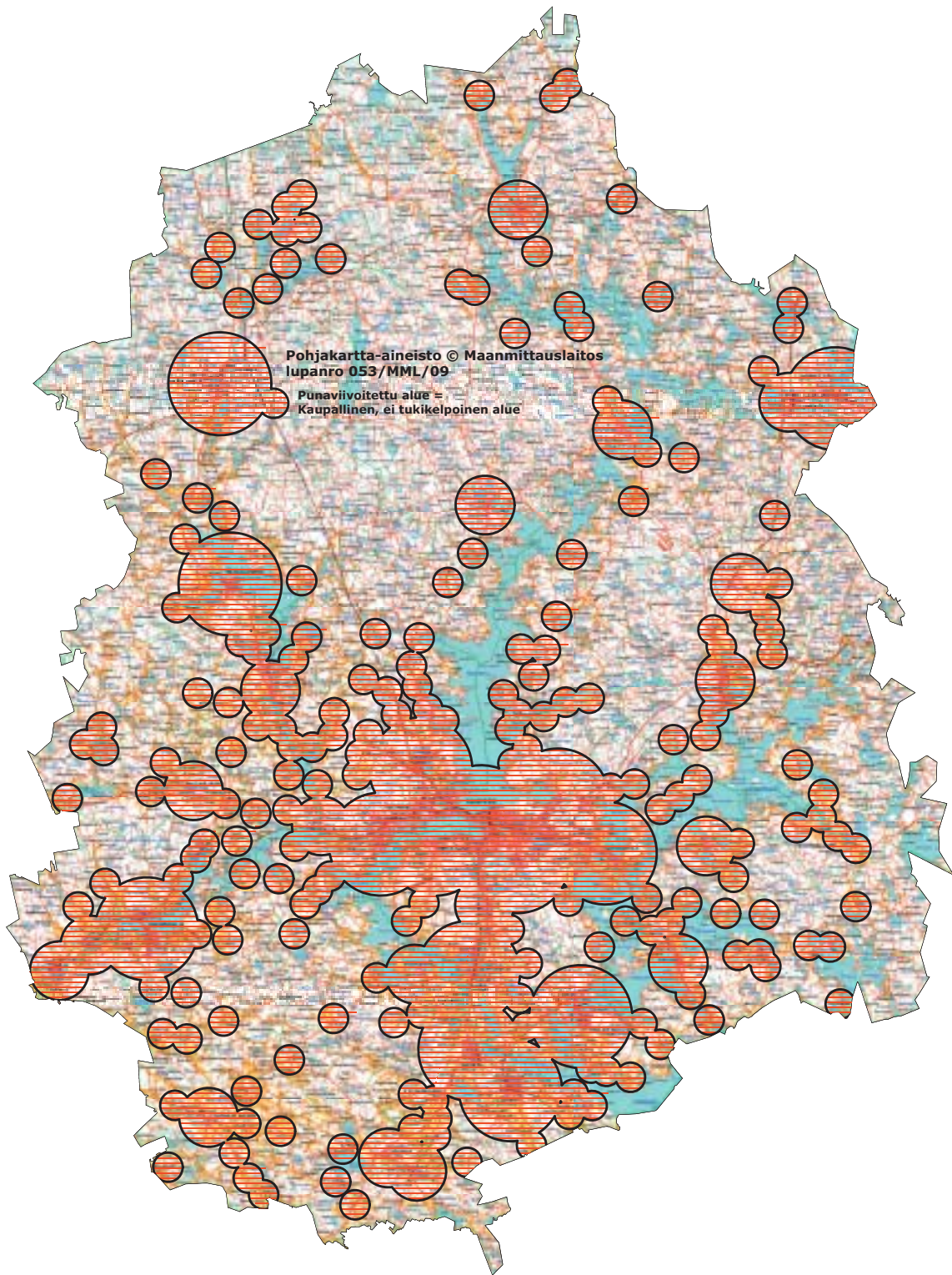


Lappi, Lapland



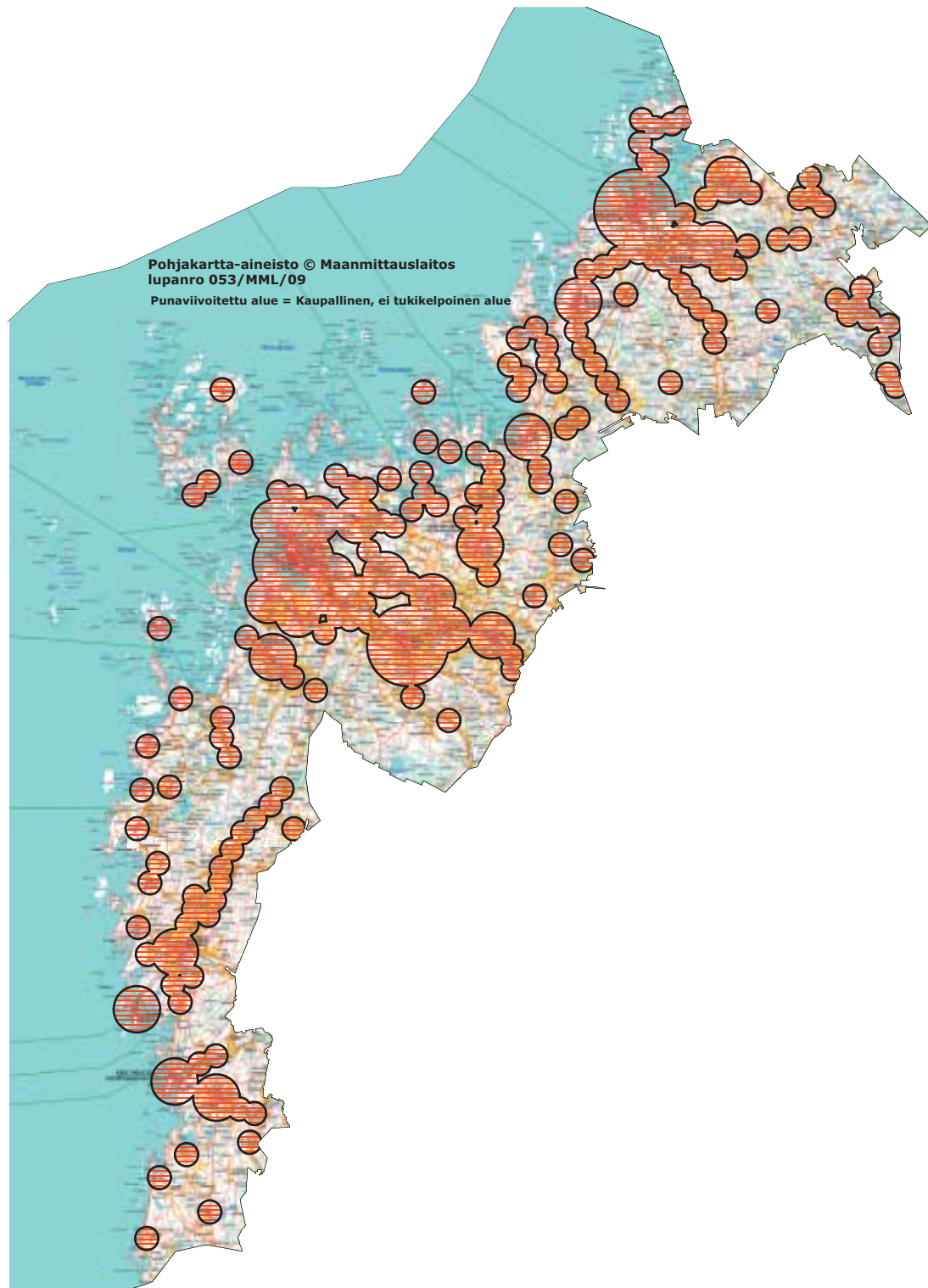


Pirkanmaa, Birkaland

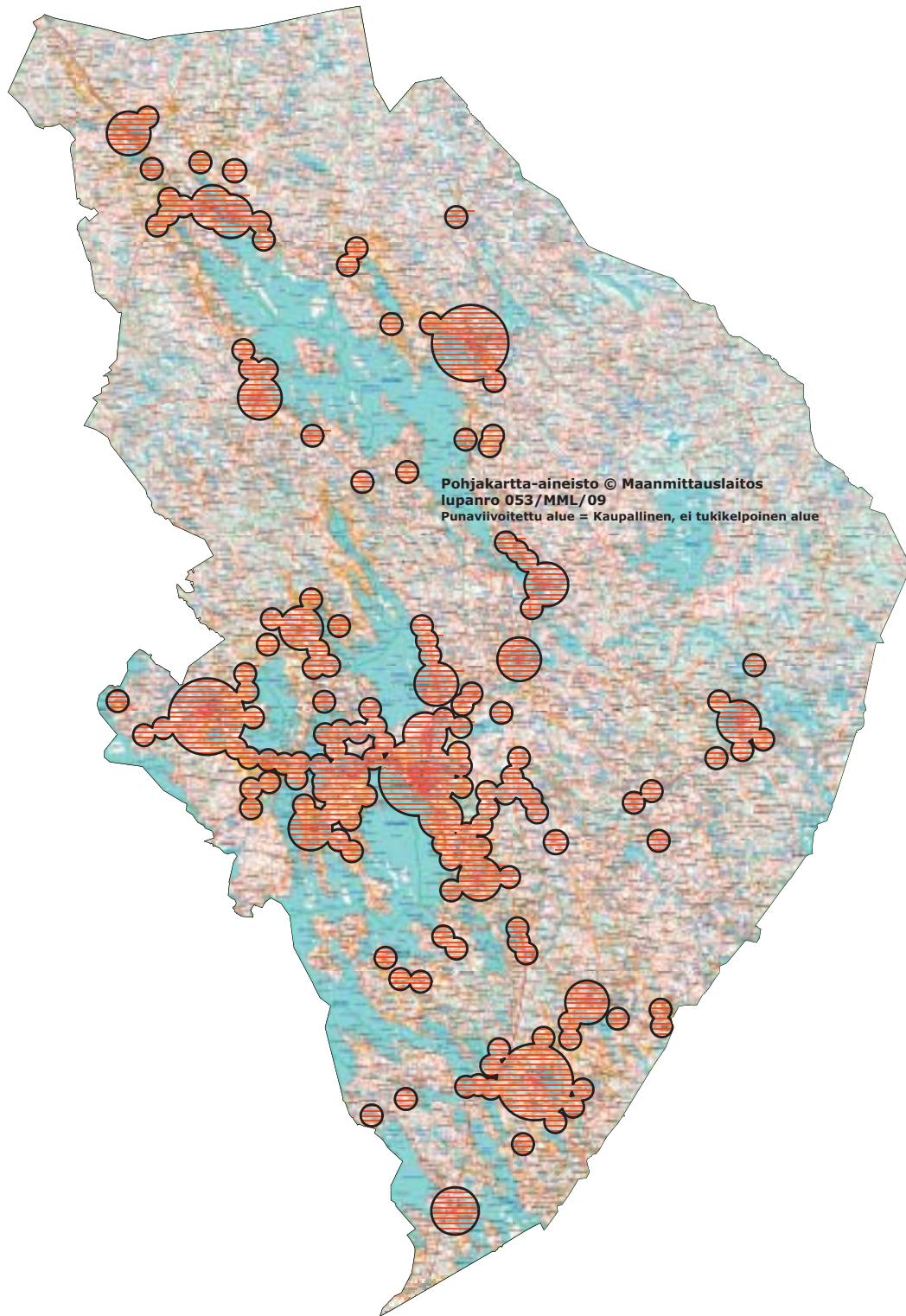




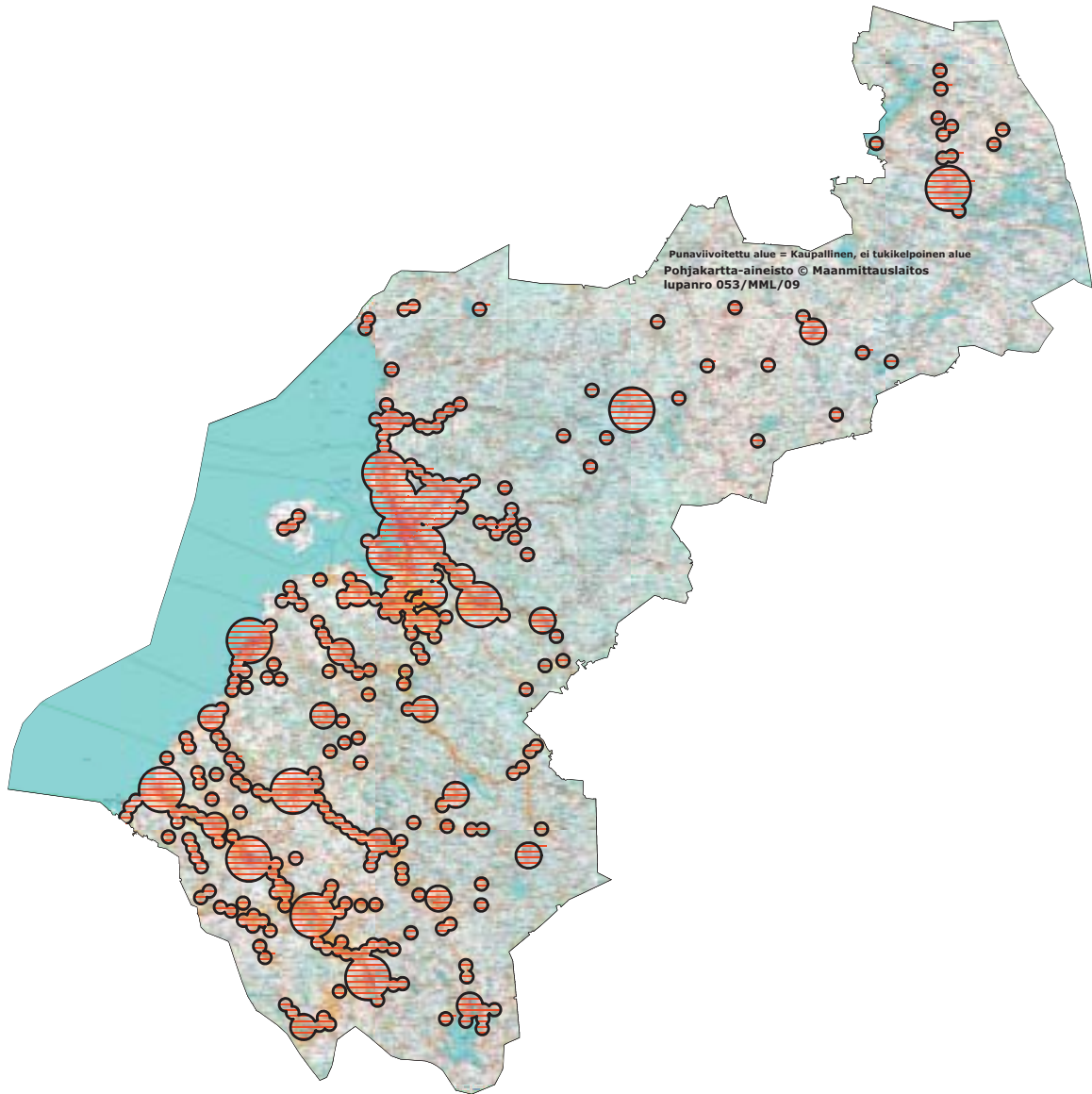
## Pohjanmaa, Österbotten



Pohjois-Karjala, Norra Karelen

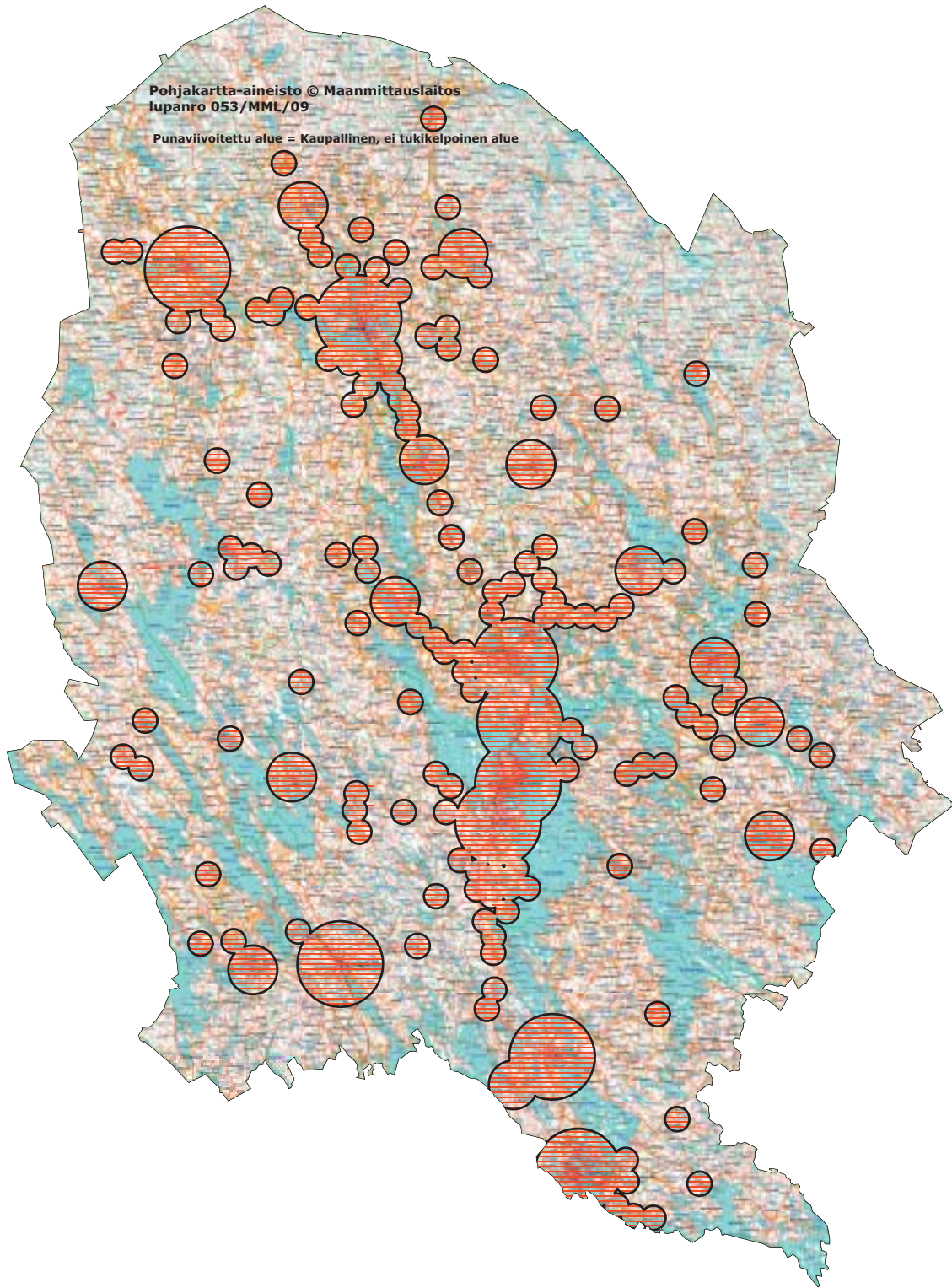


Pohjois-Pohjanmaa, Norra Österbotten



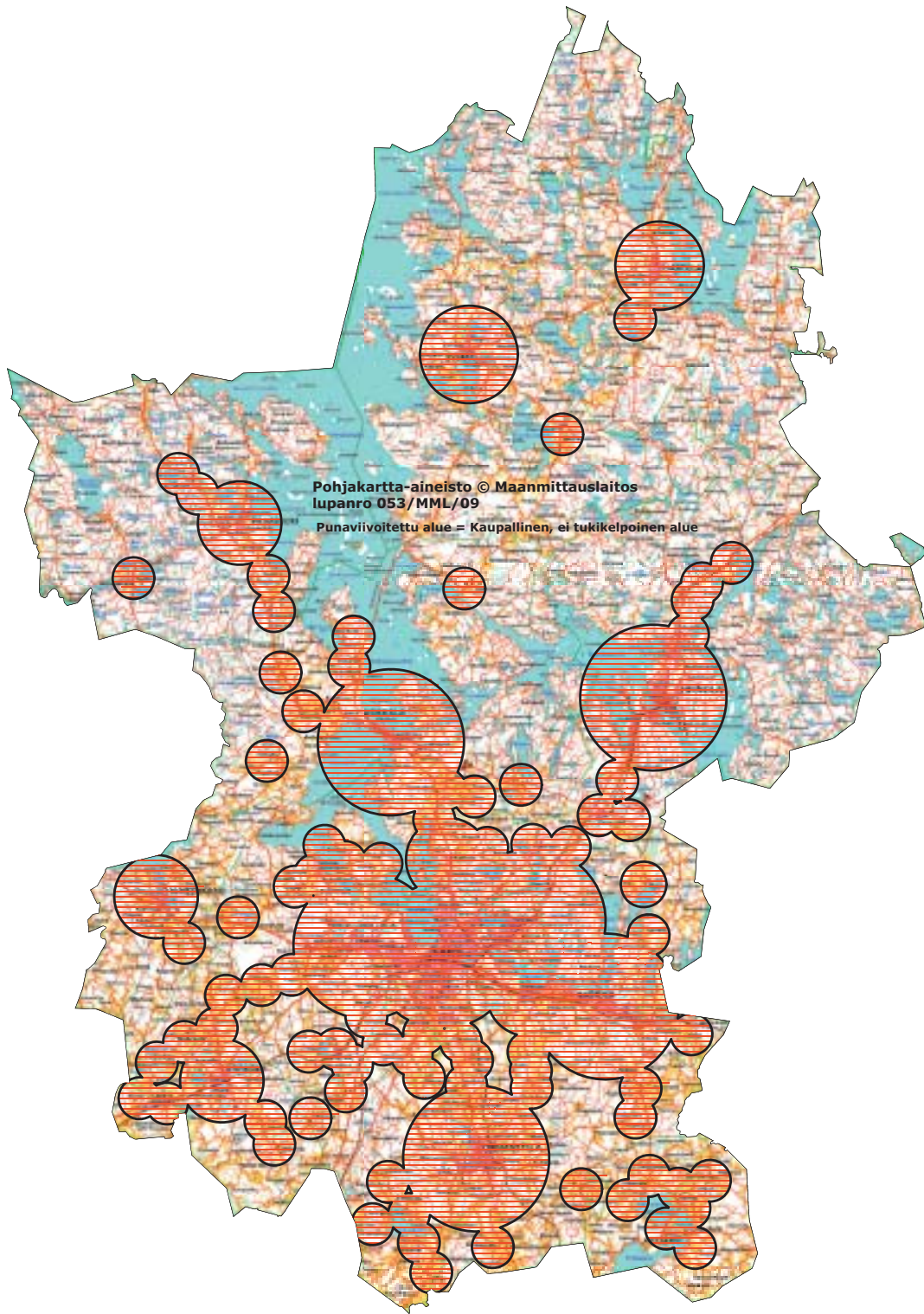


Pohjois-Savo, Norra Savolax

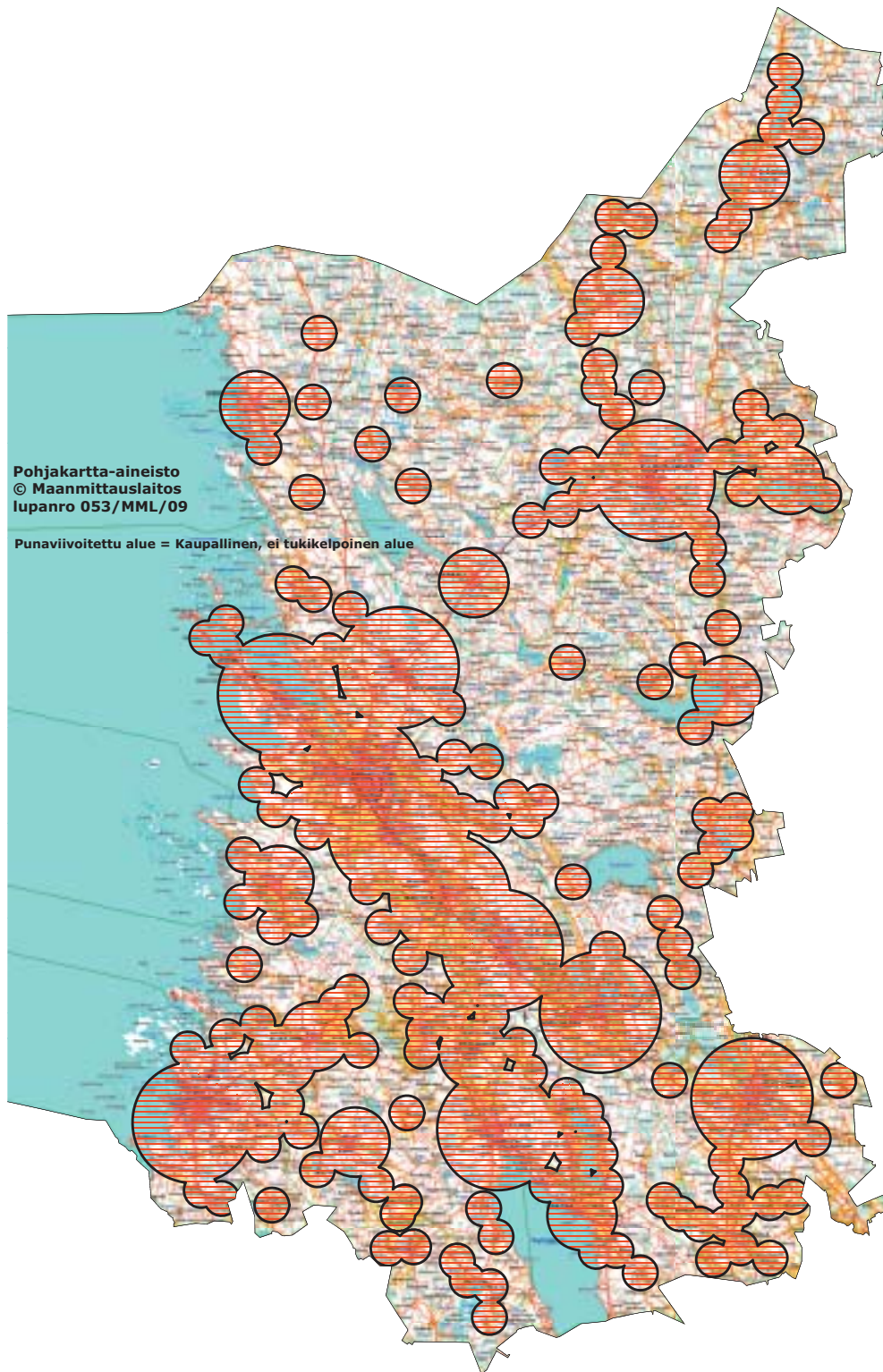




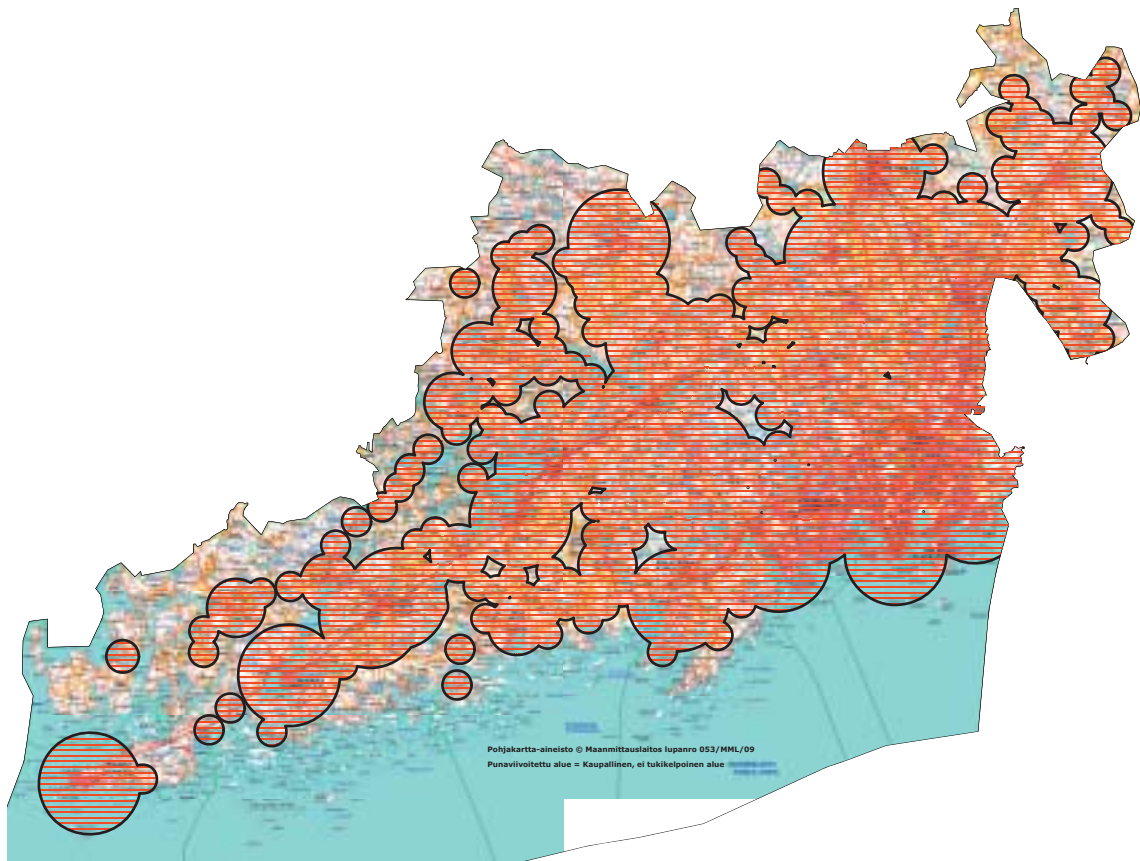
Päijät-Häme, Päijänne-Tavastland



Satakunta

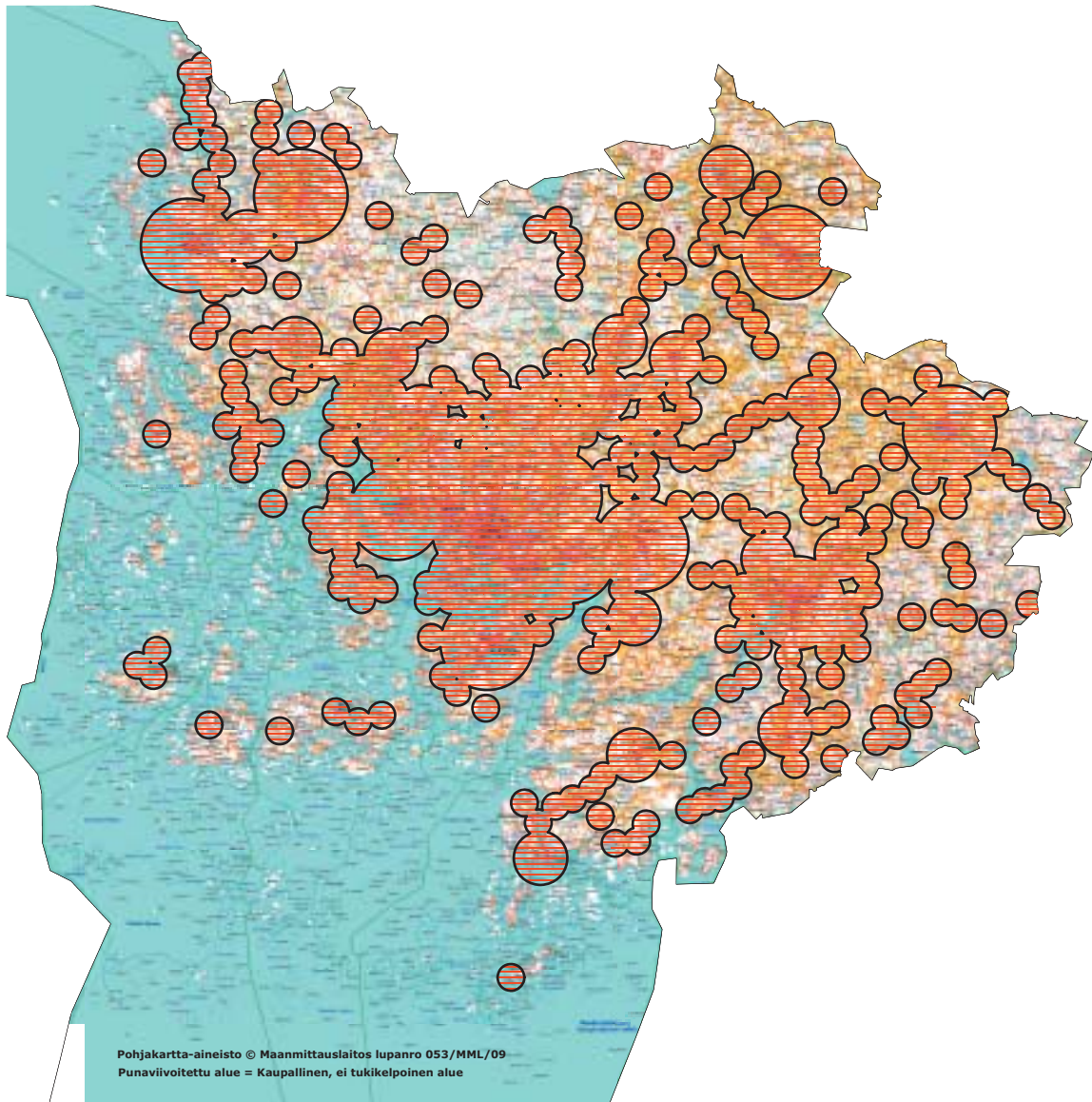


Uusimaa, Nyland





Varsinais-Suomi, Egentliga Finland





JULKAISIJA: OIKEUSMINISTERIÖ

---

N:o 244—246, 3 arkkia

---

EDITA PRIMA OY, HELSINKI 2010

EDITA PUBLISHING OY, PÄÄTOIMITTAJA JARI LINHALA

ISSN 1237-3419